

An aerial, high-angle photograph of a city at night. The city's lights are visible as a grid of glowing points and lines, receding into the distance. The word "LOGIQ" is superimposed in the center of the image in a large, bold, red, sans-serif font. The background is dark, with the city lights providing the primary illumination.

**LOGIQ**

**Logiq** is the leading digital trade network in the Nordics for companies with transaction-heavy value chains.

Our cloud-based platform has full support for all document types in the purchase-to-pay (P2P) and order-to-cash (O2C) processes.

In combination with our value-added services, this means that you can communicate digitally with all your trading partners – independently of their work processes and systems.

Our services will give you

- **Confidence** in the digital communication with your trading partners
- **More time** to focus on your core business and value creation
- A scalable platform **adapted to your needs** – today and in the future

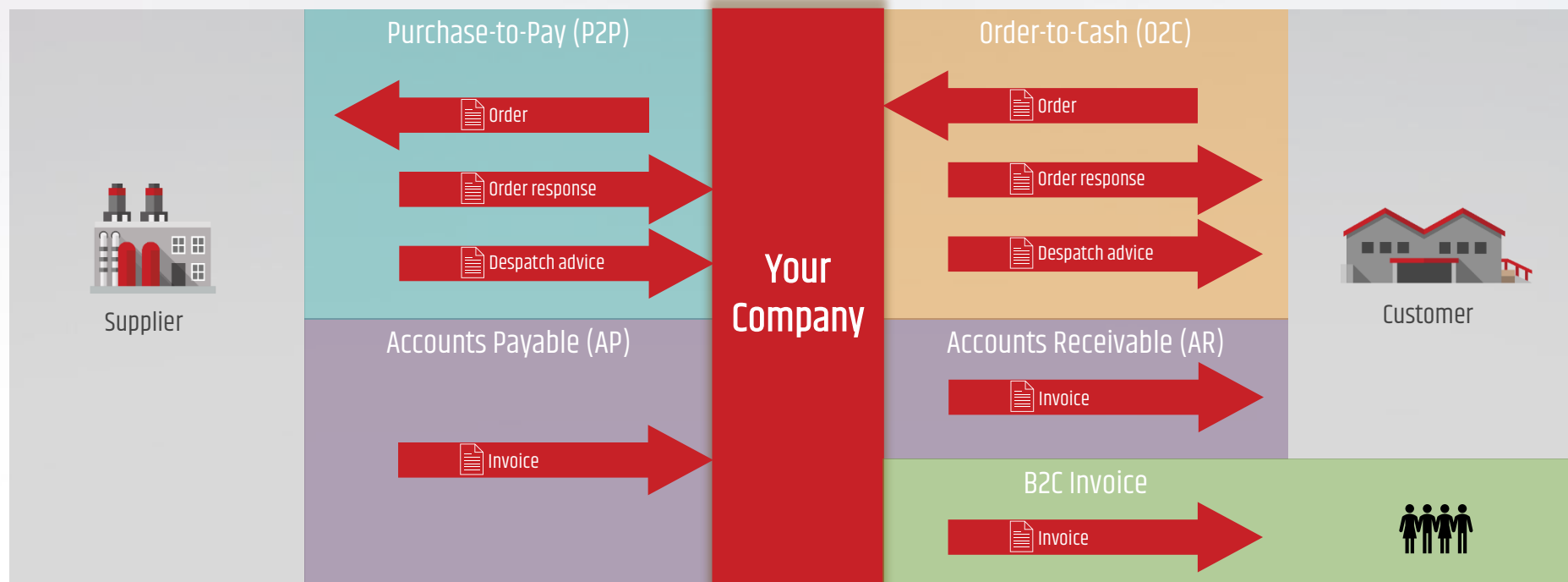
**Best support**

**Best quality**

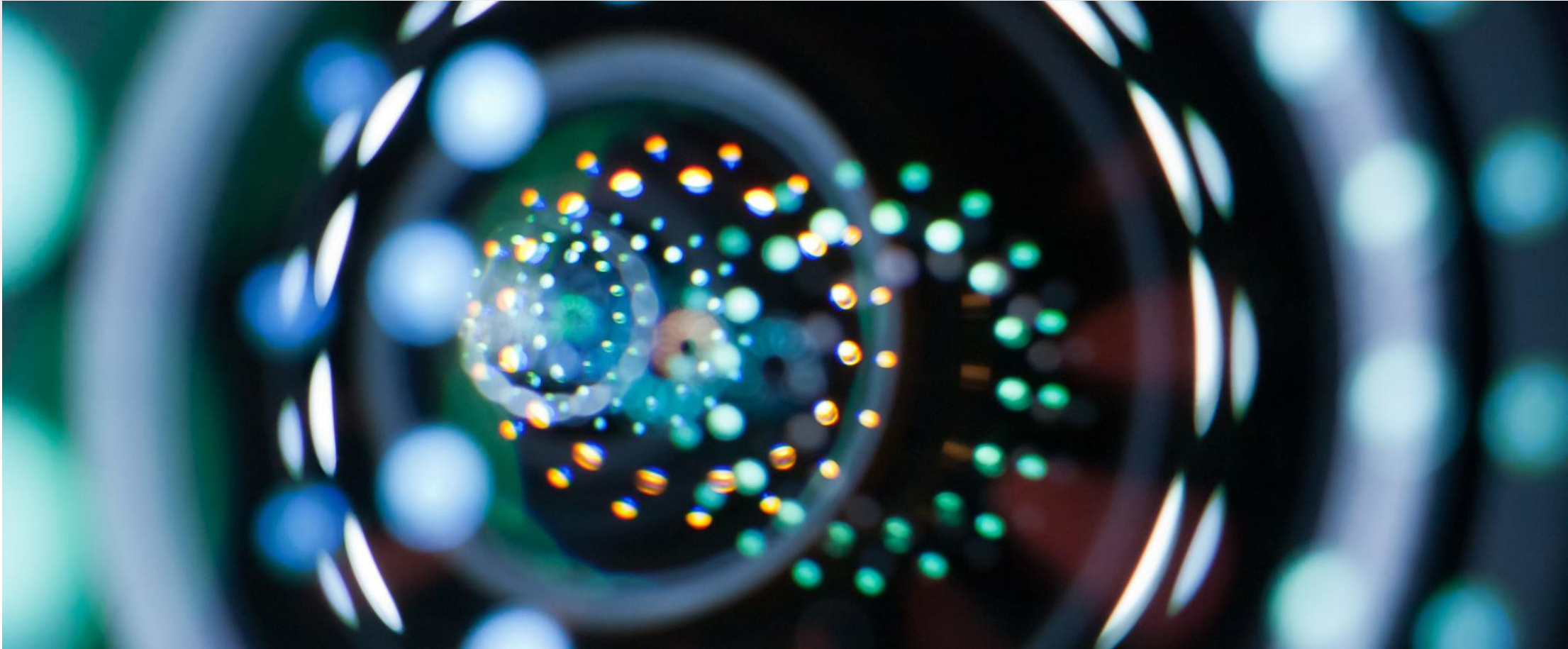
**Highly competent**



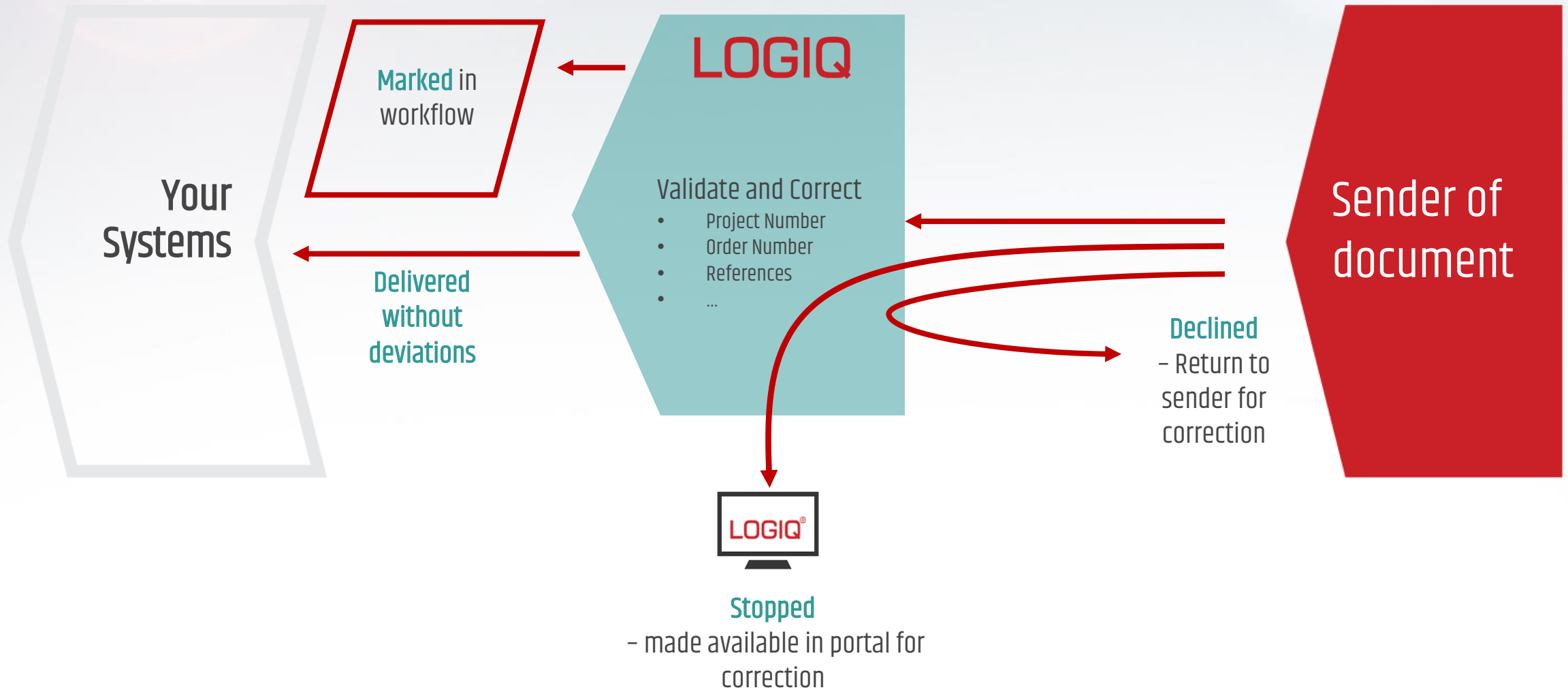
# Full support for your trade processes



Some highlights

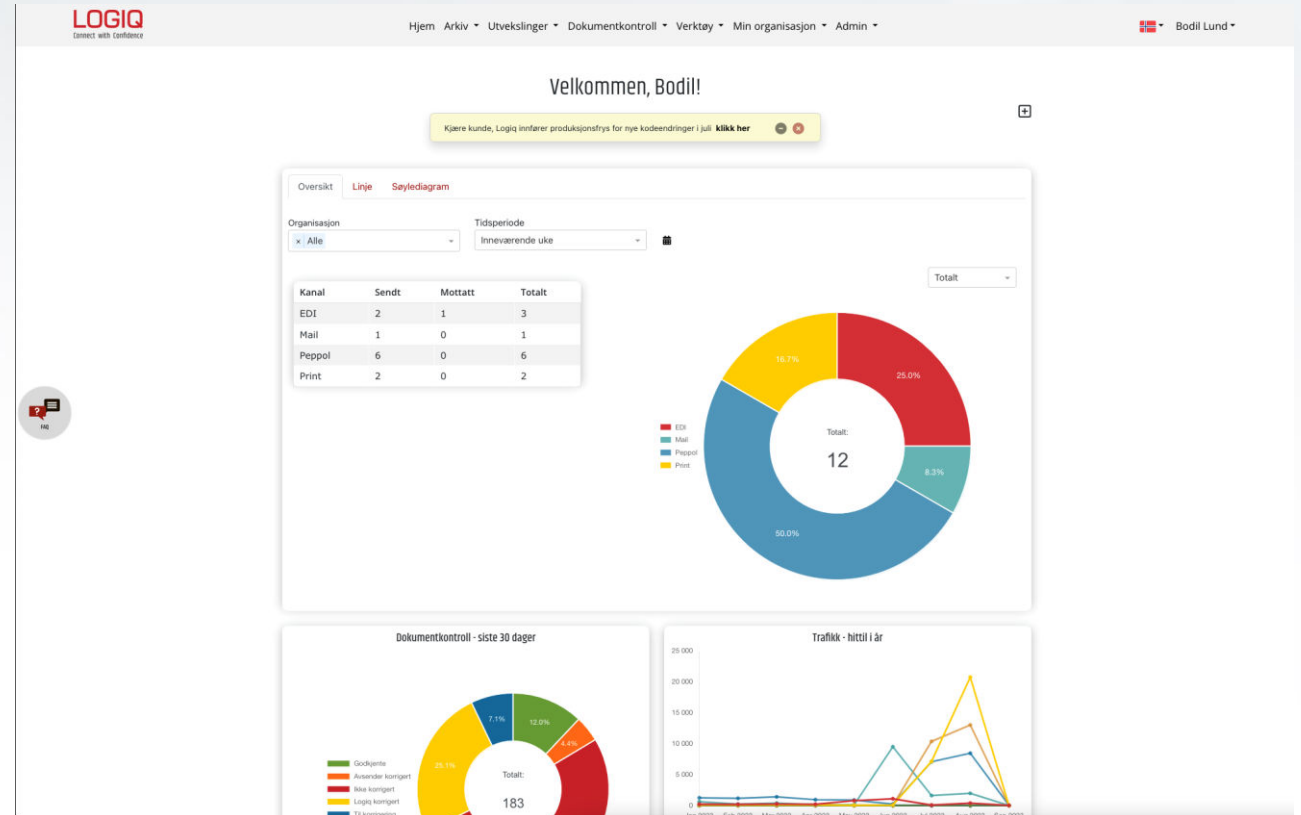


# Logiq Document Control



# New Customer Portal

- New and improved Customer Portal, launched 2023
- Flexible platform with a modern UI
- Based on new (and faster) technology
- New functionality added frequently
  
- All customers have been invited to the new portal, most have migrated
  
- Coming up:
  - Configurable dashboards / front page
  - Information / warnings
  - ... and more



# API's

## File Transfer (SFTP)



- Easy set-up
- Low-touch
- Universal
- Secure

Vs

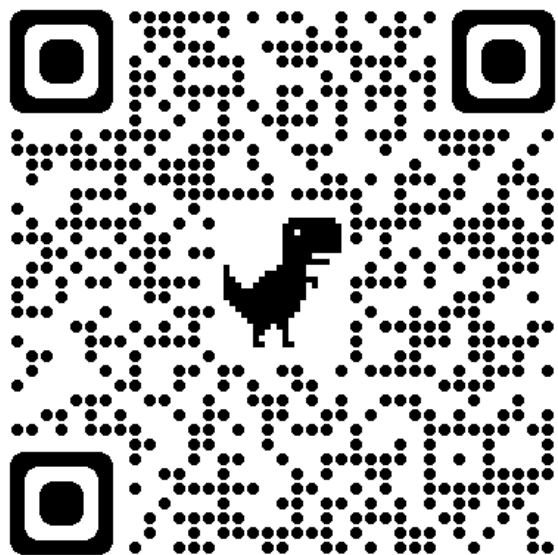
## API



- Integrated (two-way)
- Lookups and other functions
- Status /receipts
- Universal
- Secure

**New:**  
Enhanced NEA Lookup API

# Partner resources



<https://www.logiq.no/partner-resources/>

The screenshot shows the LOGIQ website's 'Partner resources' page. At the top, there is a navigation bar with the LOGIQ logo, a language selector (ENG | NO | SE), and a search icon. Below the navigation, the page title 'Partner resources' is displayed. The main content area features several paragraphs of text describing LOGIQ's position as a leading Scandinavian provider of cloud-based solutions, their expertise in various domains, their customer focus, and their commitment to digitalization. To the right of the main text, there is a 'Aktuelt' (Current) section with three featured articles: 'Logiq & Peppol samarbeider' (dated 26.04.2023), 'Vipps eFaktura avvikles' (dated 05.12.2022), and 'EESPA 2022 Annual General Meeting' (dated 30.11.2022). Below the main text, there is a 'Services' section with a sub-section for 'EDI' (Electronic Data Interchange) and 'Document control'. The EDI section describes the cloud-based platform's support for various document types and lists product sheets in English, Norwegian, and Swedish. The Document control section describes a service that validates information in documents and lists product sheets in English and Norwegian.